

GSatTrack 2.0 Easy Onboarding

Some things are new, others are changing, but everything is improving

The New GSatTrack Portal

In an effort to improve our services for all of our current and future clients, GSE has made some major developments to its telematics visualization platform, GSatTrack, which go live through the course of Q1 2019. Most of these changes pivot around the release of a new, intuitive, device-responsive user interface that supports better performance and a more consolidated user experience.

We've created this document to ensure your understanding of the new interface, including the location and flows of some of the most popular and oft-used feature functionality. The majority of each user's GSatTrack experience will be the same, but with more intuitive and informative iconography, navigation, and status indicators. Additionally, GSatTrack has evolved to include some powerful new features such as dynamic group filters, which will increase the efficiency of asset managers by allowing them to focus on tracking only assets that meet a set of parameters they wish to monitor.

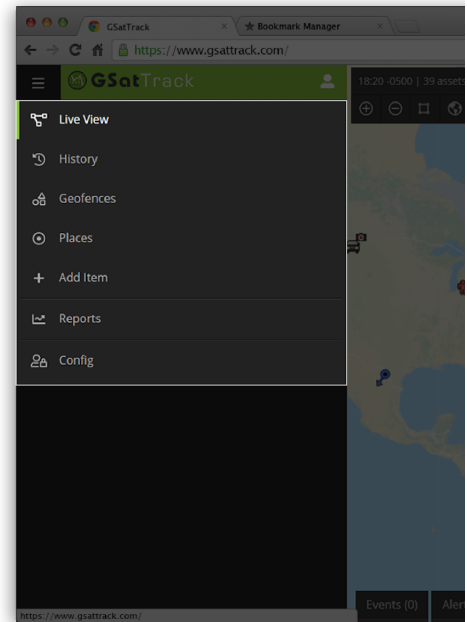
Major UI Changes

The biggest changes to the GSatTrack portal are related to the new interface that has been optimized for daily use of the most popular functionality. GSatTrack has always been an industry leading telematics visualization portal, and the insights we've gained from speaking with our clients and with future clients have helped us develop a layout and information delivery system that accommodates their greatest needs while increasing the efficiency of their asset managers.

The multi-layer functionality panel to the left of the screen replaces the old activity panel, but still represents the primary means of interacting with the data and asset ecosystem. The focus of improvements to this panel involve making it more of a centralized and complete launchpad for tools provided by the platform.

Augmented User Experience

With a new UI comes a modified way of doing a number of the processes you've become accustomed to executing on a daily basis. Below, we will walk you through a number of those flows using the new interface so that you can comfortably adopt the new system quickly and easily without having to spend hours reviewing a new user manual. Additionally, performance and processing load for the platform will be optimized to operate faster by condensing the viewable information to only show priority items in the live view according to user settings.



Adding a User

What you do with the new GSatTrack 2.0

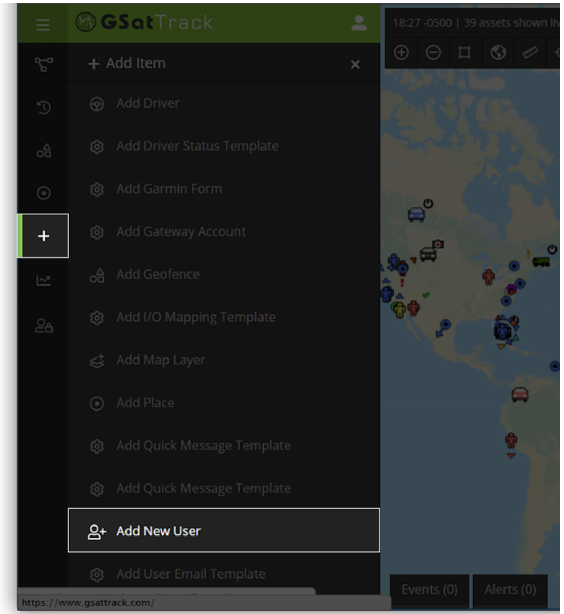
- Navigate to the left panel, click the plus icon (Add)
- Click “Add User” from the second panel
- Fill in the information you want stored for the user

What you used to do with the original GSatTrack

Users were created from the user management tab in the upper right corner of the interface.

How it got better

Adding or creating any kind of entity in the GSatTrack portal can now be done from a single menu nested in the Add (+) navigation header. This will help newer users set up ecosystems in less time, and will also allow users to follow the same steps no matter what they are trying to add/create.



Adding an Asset

What you do with the new GSatTrack 2.0

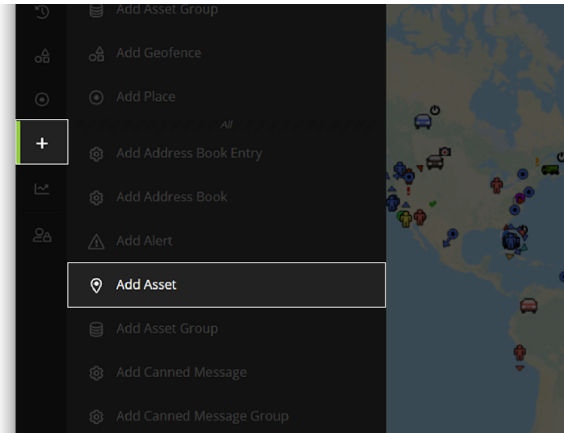
- Navigate to the left panel, click the plus icon (Add)
- Click “Add Asset” from the second panel
- Fill in the information you want stored for the asset

What you used to do with the original GSatTrack

Under the Assets tab, the Add Asset button was available under each group, allowing you to add assets to each group from the left panel.

How it got better

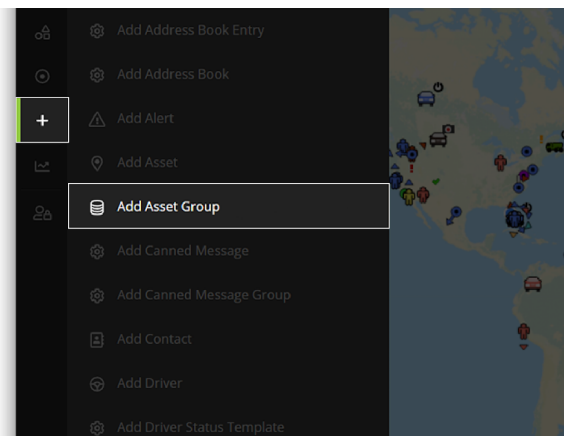
Adding or creating any kind of entity in the GSatTrack portal can now be done from a single menu nested in the Add (+) navigation header. This will help newer users set up ecosystems in less time, and will also allow users to follow the same steps no matter what they are trying to add/create.



Creating a Group

What you do with the new GSatTrack 2.0

- Navigate to the left panel, click the plus icon (Add)
- Click “Add Group” from the second panel
- Fill in the information you want stored for the group



What you used to do with the original GSatTrack

In the Assets tab, groups could be created with the button at the top of the interface. If creating groups after adding assets, users could assign assets and permissions to other users from the create group popover.

How it got better

Adding or creating any kind of entity in the GSatTrack portal can now be done from a single menu nested in the Add (+) navigation header. This will help newer users set up ecosystems in less time, and will also allow users to follow the same steps no matter what they are trying to add/create.

Tracking Assets

What you do with the new GSatTrack 2.0

Decide which view you'd like to see (Live, History, Follow, or Trails)
Select that view option from the left panel

To view specific assets, select them from the list or from the map view

What you used to do with the original GSatTrack

Nothing has changed from the original GSatTrack except for new iconography to help asset managers focus on the most important assets first.

How it got better

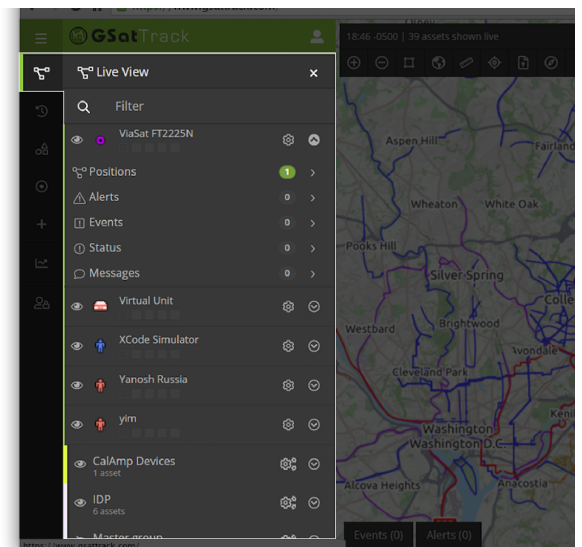
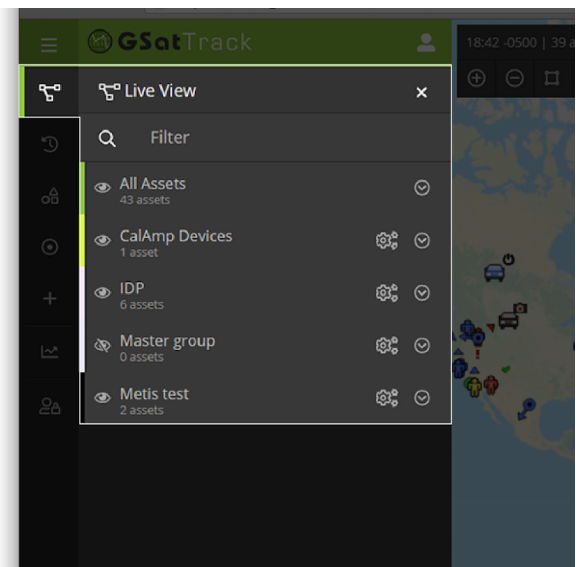
The new GSatTrack interface has a multitude of new alert icons, which allow asset managers to focus on the assets that matter most from a higher-level view of the entire ecosystem. Additionally, with new filters and grouping controls, managers have the ability to reduce the active interface to show critical data more intuitively, without having to toggle the visibility of multiple assets or groups individually.

Configuring and Managing Assets

What you do with the new GSatTrack 2.0

There are multiple ways to interact with an asset that has already been loaded into GSatTrack. Find the asset on the map or in the list of assets in the left panel of the view option you've chosen. Next to that asset's name you will find an arrow and a gear symbol. The arrow will open the asset's tracking information, which would previously have been summarized with the colored icons under its name.

The gear icon opens a second panel that allows users to interact with assets as they always have with GSatTrack, including setting parameters, sending messages, sending commands, routing, waypoints, and other portal-based management activity.



What you used to do with the original GSatTrack

Find the asset on the map or on the list in the left panel, then click the down arrow next to the asset and select “Edit Asset.” In the pop-over box, configure the settings, attributes, and other remote-configurable characteristics of that asset directly from the portal.

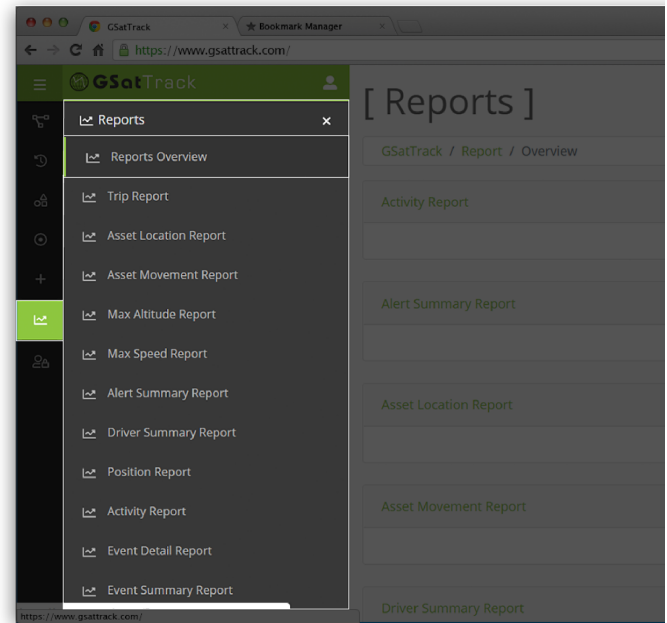
How it got better

GSatTrack’s new interface summarized asset statuses, making it easier to see important status indicators at a glance instead of reviewing an entire tracking history.

Generating Reports

What you do with the new GSatTrack 2.0

Click on the Reports tab/icon in the far left menu, then in the extended panel, select the report you would like to create or view. Each report visualization will run in the main window.



What you used to do with the original GSatTrack

Navigate to the reports tab, select the type of report you wish to generate from the list on the left panel, then configure the data you want on the report in the main window. Reports could be viewed in the portal or exported in a variety of viewable formats.

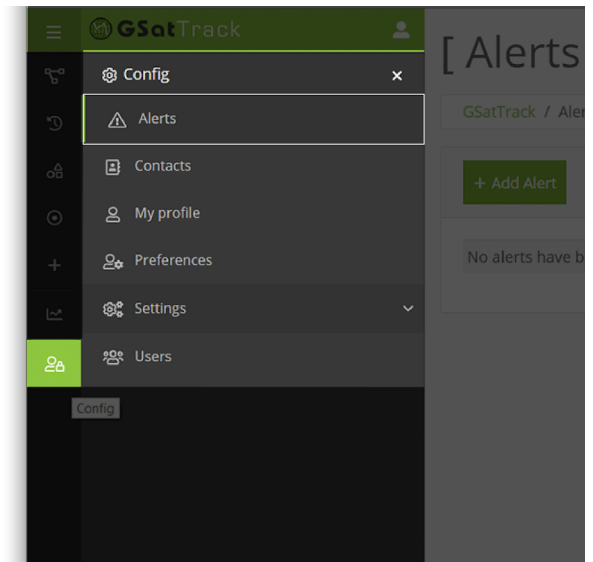
How it got better

Throughout the course of 2019, GSatTrack’s reporting feature will be seeing changes related to making the interface more manageable for extensive reports, as well as expanding the reporting functionality to include new grouping features that are in development.

Configure Alerts

What you do with the new GSatTrack 2.0

Alerts can be created from the Add Item menu, or from specific assets and geofences. Managing existing alerts includes being able to interact with them directly on the asset or geofence that created them, or finding them in the notifications section of the interface. Additionally, in the admin menu, there is an option to configure all existing alerts from one central location.



What you used to do with the original GSatTrack

Navigate to the Alerts tab, then manage all alerts via edit, delete, and add buttons in the main window. Editing or creating an alert opened a new window with all configurable fields.

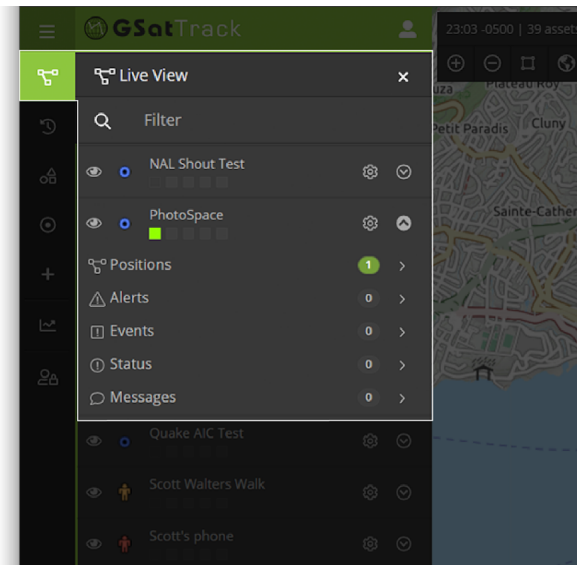
How it got better

As with all of the other creation tools, having everything in the add item menu makes it far easier to add alerts. Beyond that, the benefits are mostly interface changes that make it easier to view and interact with the alert settings.

View Alerts, Events, and Messages

What you do with the new GSatTrack 2.0

Alerts, Events, and Messages can all be found in the top right corner of the interface nested under the notification icon. Additionally, managers can view alerts and messages from assets and groups by clicking the notification icons on the left panel.



What you used to do with the original GSatTrack

Alerts and Events appeared in the bottom of the interface, and lacked a strong and visible notification system. Messages from devices appeared next to the asset on the mail icon.

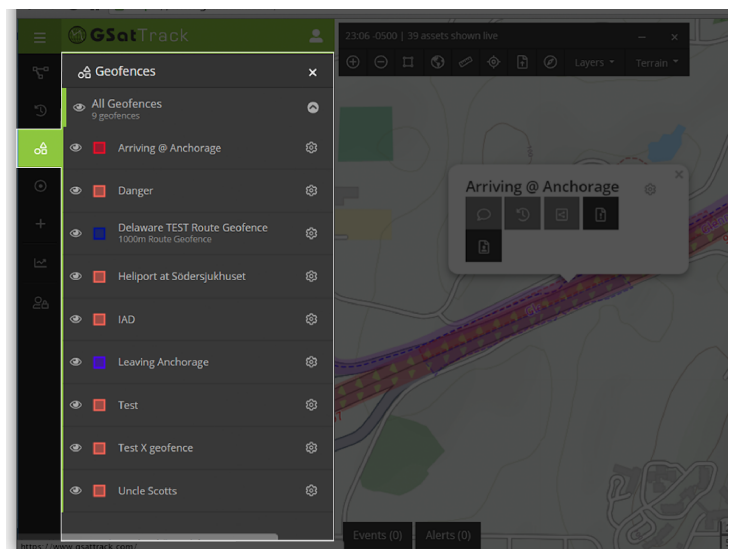
How it got better

A more visible notification system and the addition of notification icons to the left panel make it easier for managers to isolate the notifications that are most sensitive. It is also more representative of the notification visualization that people have grown accustomed to on their mobile devices, bringing the experience a more modern look and feel.

Geofencing

What you do with the new GSatTrack 2.0

Geofences have their own top-level navigation icon in the far left panel. All active and mapped geofences can be edited, viewed, and managed within this interface in the second panel. Additionally, users can create and manage alerts for each geofence directly from the second panel.



To create a new geofence, users can use the Add menu and follow the same steps to create a Geofence that they did with the original GSatTrack portal.

What you used to do with the original GSatTrack

Users clicked on add geofence, then selected the type and color, and began clicking spots on the map until their geofence was formed. They could then configure alerts, message assets inside of the area, group assets in the area, view tracking history from inside the area, and generate location reports based on the geofence.

How it got better

The visual interface for the geofence feature has made it easier for users to understand the functionality, as well as the value of each of the advanced tools that geofences offer to managers. The alert iconography also gives managers a solid picture of the activity in the area with little need to invest in a deep dive to identify “hotspots.”

Left Panel Iconography

How it works

Perhaps the greatest changes you'll notice immediately about the panel interface is the addition of color-coded iconography that serve as status indicators. Each of the colored indicators will appear in color or faded out depending on whether the asset has any of the 5 types of notifications.

Positions (green): will display colored if the asset has reported any positions since last checked

Alerts (orange): will display colored if the asset has sent or triggered any alerts since last checked

Heightened Alerts (ie SOS) (red): will display colored if there has been an emergency alert triggered since last checked

Events (purple): will display colored if the asset has sent or triggered any events since last checked

Status (yellow): will display colored if the asset has reported any updates to status indicators since last checked

Messages (blue): will display colored if the asset has sent any new messages since last checked.

Other new iconography includes certain types of visual iconography to represent some of the more common alert or status types, like fuel warnings, service/maintenance indicators, or other distress-related icons.

